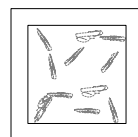


53  
(2")

up to  
3000  
(10')  
standard

up to  
30500  
(100')  
custom



378  
(15")

508  
(20")

approx 25.5kg (56lb)

PENDANTS: eleven

MOUNTING: white powder coated square canopy 508 (20") x 53mm (2") deep

LAMPING: 1.5w LED or 10w xenon

COAX: fixed lengths. 3000mm (10') standard / up to 30500mm (100') maximum

MATERIALS: pulled glass, braided metal coaxial cable, electrical components, white powder coated canopy

WEIGHT: approximately 25.5kg (56lb)

POWER SUPPLIES: integral (remote mount recommended)

## DESCRIPTION

87.11 is a random configuration of eleven 87 pendants hung from a square canopy. The drop lengths of the pendants are randomized between a client specified range of heights to variously cluster and scatter. The result is an ambient installation or field of light.

A matrix of hot glass is stretched and folded back onto itself numerous times as it cools. Air is trapped between the folds and stretched along the grain of the loop, creating microfilaments that give the piece a pearlescent optical quality. A LED light source is introduced at one end of the loop casting light through the microfilaments and registering a gentle gradient.

## NOTES

- + Purchase replacement lamps online at [www.bocci.com/shop/bulbs](http://www.bocci.com/shop/bulbs)
- + Unless otherwise noted when ordering, all chandeliers will be outfitted to be xenon compatible.
- + As an alternative to built-in power supplies, Bocci recommends mounting power supplies remotely in an easily accessible and hidden location for ease of long-term maintenance.

Worldwide patents pending  
EU Patent # 03611144 - 0005-0009

Made in Vancouver, Canada

Vancouver  
[sales@bocci.com](mailto:sales@bocci.com)  
[www.bocci.com](http://www.bocci.com)

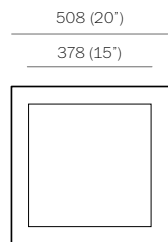
Berlin  
[europe@bocci.com](mailto:europe@bocci.com)  
[www.bocci.com](http://www.bocci.com)



SQUARE

# 87.11

Design by Omer Arbel  
PRODUCT SPECIFICATION

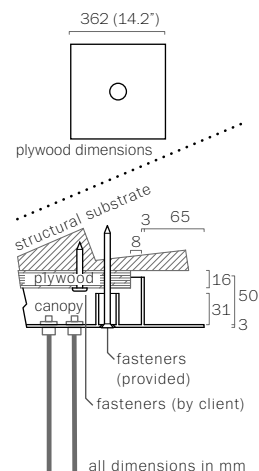


1

Note: All connections and power supplies are tested by our technicians before shipping. However, it is possible for ports/ power supplies to come loose or damage during shipping.

Test each port before installing canopy to ceiling to catch any loose connections or faulty power supplies.

Measure and mark the light fixture canopy position on the ceiling



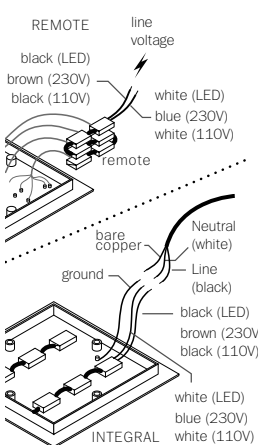
2

Note: The client is responsible for providing a robust 16mm (5/8") plywood backing or wood blocking to securely anchor to the structural substrate.

Connections from the plywood to the structural substrate are the client's responsibility.

Measure the plywood so that it fits within the canopy side walls (refer to detail above).

Anchor the plywood backing to the structural ceiling substrate.



3

Connect power supplies to line voltage.

Xenon (110V) or LED: connect the black wire to black and white wire to white wire.

Xenon (230V): connect black wire to brown wire and white wire to blue wire.

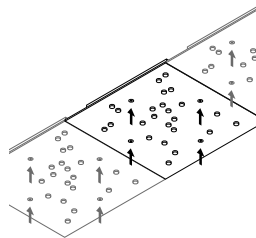
For the ground connection, connect the green wire with yellow stripe to the bare copper wire or green wire in the junction box.

Note: Bocci strongly recommends mounting power supplies remotely in a close, accessible and hidden location for ease of long term maintenance. Installation to be done by certified personnel to ensure compliance with the code.

4

Anchor canopy into the plywood backing using the fasteners provided.

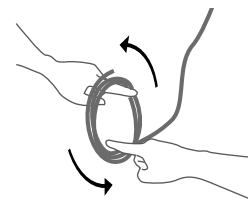
Turn power to fixture on.



5

Very carefully uncoil the braided coaxial cable in a spool like manner. Insert your index fingers into opposite sides of the roll then rotate your fingers around each other to unroll the coaxial cable.

Use patience: allow the cable to uncoil completely to avoid kinks.

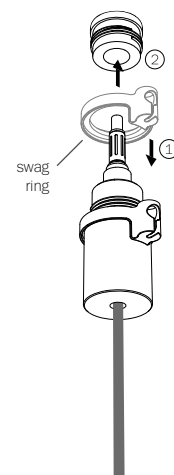


6

Each pendant terminates in a "headphone jack" type connector, which plugs into a receiving receptacle in the canopy.

Rest the swag ring on the threaded sheath.

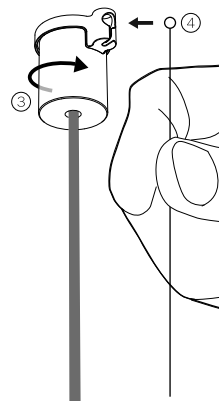
Plug in headphone jack.



7

Turn the threaded sheath into place by hand ensuring that it is adequately tightened. Tools are not required.

Slide the ball end of the aircraft cable into the swag ring slot and pull down. Make sure the aircraft cable is seated properly.



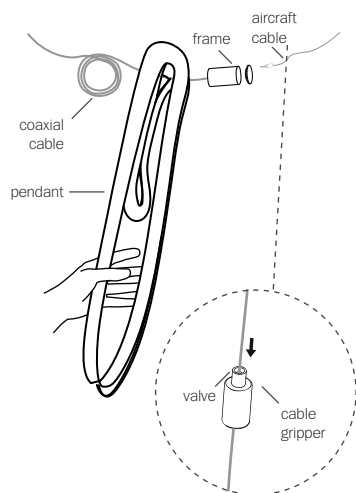
SQUARE

87.11

Design by Omer Arbel  
PRODUCT INSTALLATION INSTRUCTIONS

© 2020, Bocci Design and Manufacturing Inc. All rights reserved. Any inquiries should be directed to: info@bocci.com

**BOCCI**

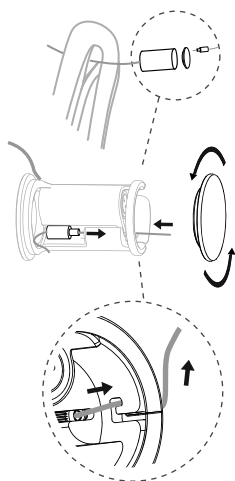


8

Push the valve on the cable gripper and adjust the position of the cable gripper so that the aircraft cable is roughly the same length as the coaxial cable.

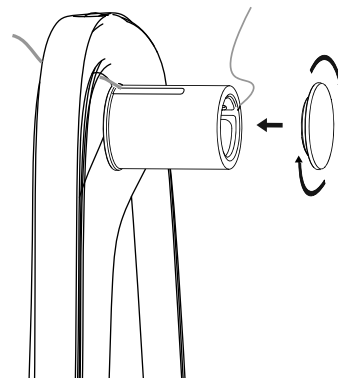
Apply a load to the cable to ensure it is locked.

Thread the frame assembly through the top hole of the 87 pendant.



9

Unscrew frame cap opposite to the coaxial cable. Hook the cable gripper into the pocket inside the frame and guide the cable through the u-shaped hook in the frame and the silicone tube.



10

Screw frame cap back onto the frame assembly.

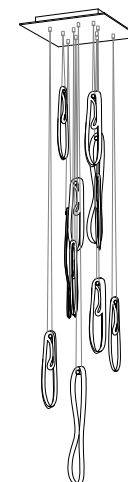


11

Rest pendant onto frame assembly.

If needed, repeat step 8 to adjust the position of frame.

Note: Frame assembly should hang level. The swag cable and the coaxial cable should be approximately the same length.



12

Clean fingerprints from surfaces.

For additional assistance, please contact Bocci:

Vancouver  
sales@bocci.com  
www.bocci.com

Berlin  
europe@bocci.com  
www.bocci.com

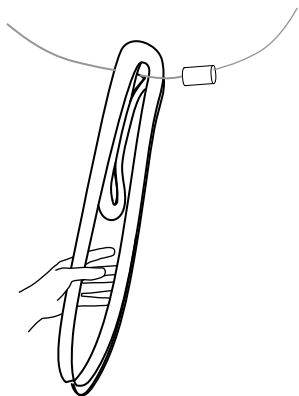
Worldwide patents pending  
EU Patent # 03611144 - 0005-0009

Made in Vancouver, Canada



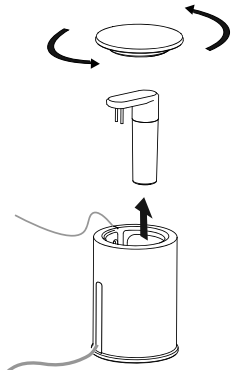
SQUARE

87.11



1

Lift glass off of lamp holder assembly and hold securely.



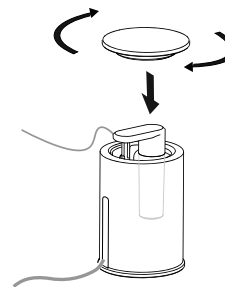
2

Unscrew cap at the aircraft cable end of the lamp holder assembly. Push coaxial cable through the slot in the silicone sheath, and remove lamp and lamp adapter.



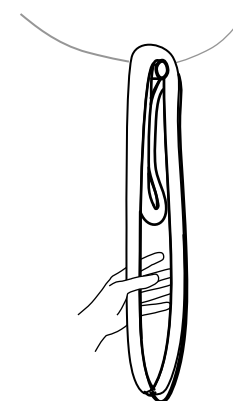
3

Remove lamp from lamp adapter and replace with new bulb.



4

Screw cap back onto the lamp holder assembly.



5

Gently rest pendant back onto lamp holder assembly.

Clean fingerprints from glass surfaces.

Turn power to fixture on.

For additional assistance,  
please contact Bocci:

Vancouver  
sales@bocci.com  
www.bocci.com

Berlin  
europe@bocci.com  
www.bocci.com

Worldwide patents pending  
EU Patent # 03611144 - 0005-0009

Made in Vancouver, Canada



SQUARE

87.11

Design by Omer Arbel  
LAMP REPLACEMENT INSTRUCTIONS

© 2020, Bocci Design and Manufacturing Inc. All rights reserved. Any inquiries should be directed to: info@bocci.com

**BOCCI**