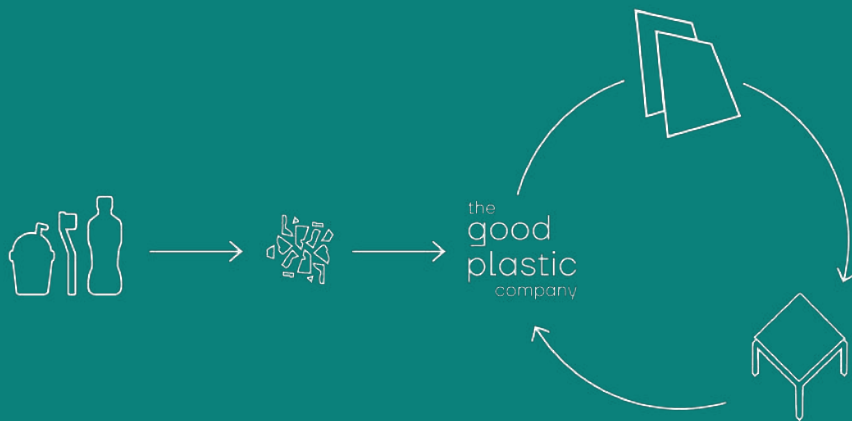


# Goodbye bad plastic, hello Good Plastic

What was once considered waste can now  
remain a beautiful part of our lives

The Good Plastic Company is a mission-driven organisation that is determined to contribute to solving the problem of the 400 million tonnes of plastic waste that are generated annually



We produce panels from recycled plastic. They are high quality and have the lowest ecological footprint possible. Each panel is made from a single type of plastic so it can be easily recycled, extending its use indefinitely.

We are your partner in understanding and working towards true sustainability.

Our aspirational goal is to incorporate recycled plastic into the circular economy in as many countries as possible. With our help, what was once considered waste can now become a beautiful part of our lives.



Our unique proprietary machinery recycles 70% of existing types of plastic by turning waste into beautiful decorative panels of varying sizes and thicknesses

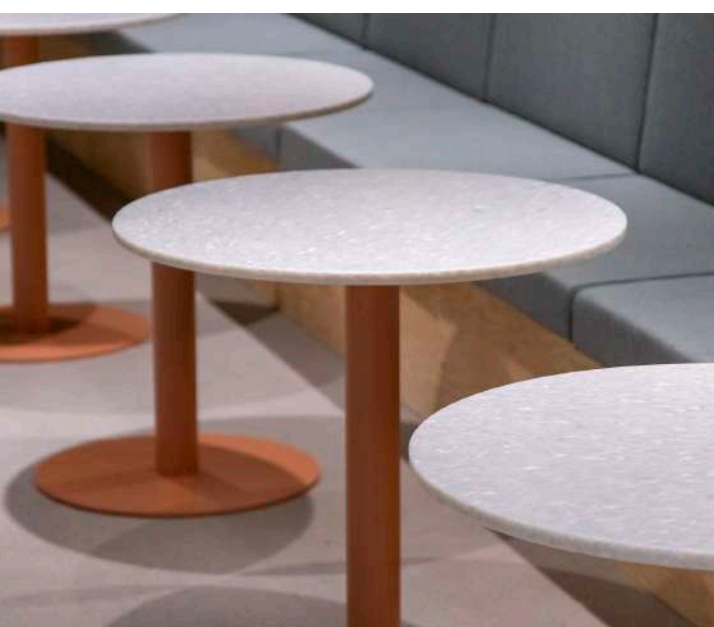
Our manufacturing process is the heart of our company. We have developed game-changing technology that allows us to re-use up to 70% of existing types of plastic, unlike inferior off-the-shelf machinery. Our proprietary line of manufacturing equipment has been officially certified by a European Union-approved agency and bears the CE Mark.

In addition to its technological advantages, the efficiency of our equipment and its pragmatic design mean that we can scale up globally in a more nimble way than traditional manufacturers. Constant investment in R&D ensures that we stay ahead of the curve and produce the highest quality products.









Sustainability is a core value in our company, and so we only use 100% renewable energy

We are also proud to be working towards being a zero-waste manufacturer as we recycle all manufacturing remnants into new products, giving our plastic a new, beautiful and sustainable life in the circular economy.

At The Good Plastic Company, we advocate for a localised plastic recycling and remanufacturing model by simplifying logistics, leading to reduced CO<sub>2</sub> emissions. Our 'think globally, act locally' strategy has already given us a footprint in three European countries, and we are working on expanding to further territories.



Our distinctive plastic panels can be used to create modern environmentally-conscious interior or exterior design elements

We believe that by generating demand for products made from recycled plastic we can keep this valuable material from ending up in landfill, the oceans, or incinerators. We demonstrate to companies that they can make beautiful and functional new goods from locally produced waste and make a visible commitment to the circular economy











Brands all round the world are implementing circular economy business models, driven by regulation and market demand. Their due diligence reviews pay increasing attention to their environmental, social and governance policies, the origin of materials, and working conditions. This sustainability transformation is a substantial challenge but also an opportunity for all companies in the supply chain.


Brands need a tangible way to demonstrate shared values to their customers and enhance brand affinity

Press releases and financial report disclosures are not enough to communicate environmental credentials. An effective method to help brands make a powerful impression is by incorporating recycled materials into retail and commercial interior implementations.

Accents made from our Good Plastic panels reduce the need for virgin materials and cast brand identity in a sustainable light. Wall panels and shelving, retail counters and displays, signage and storage: each corner shop, retail outlet or department store can give new life to the equivalent of 20,000 computer mice or 10,000 shampoo bottles. Rolling a design out to five locations could save an elephant's weight in plastic!

Our materials' sustainable advantages are equalled by their aesthetics. And for an exclusive touch, The Good Plastic Company can create a bespoke pattern that matches any brand colour palette.





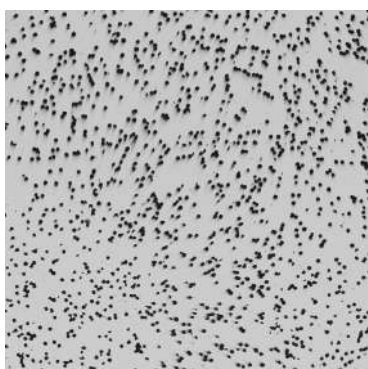
Each Good Plastic pattern is made from just one type of plastic, so they are 100% recyclable as well as being made from 100% recycled material

**Dimensions: 1000x1000mm, 1400x1400mm, 1400x2800mm**  
**Thicknesses: 10mm, 15mm, 20mm**

We present our nine selected patterns for your projects. Our core Classic and Basics collections are always ready to order in sizes from 1000x1000mm to 1440x2800mm and in standard thicknesses from 10 to 20mm. We aim to make panels oversized (+30-50mm), so you have the opportunity to cut them the way you need. The dominant colours in our range reflect some of Pantone's current trend colours to ensure that your designs are as stylish as they are modern.

# Classic Collection

The Classic range comprises naturalistic and modern patterns in a range of colour palettes that combine beauty and sustainability. Available in quantity for interior and exterior design projects.



**#PS126: Timeless Duo**

Origin: refrigerators and household electronic goods



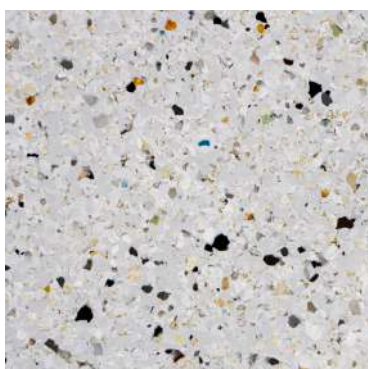
**#PS130: Reverse Timeless Duo**

Origin: refrigerators and household electronic goods



**#PS144: Greycious**

Origin: household electronic goods



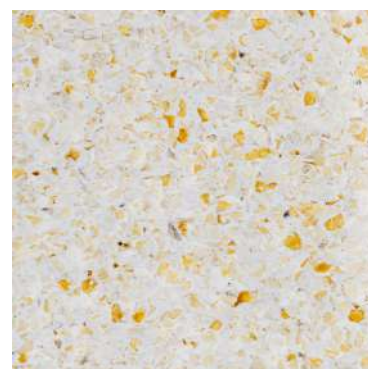
**#PS155: Terrazzo Nuovo**

Origin: refrigerators



**#PS134: White Lollipop**

Origin: refrigerators and single-use plastic cutlery



**#PS140: Marbellous**

Origin: refrigerators

Composition: 100% recycled PS



## Basics

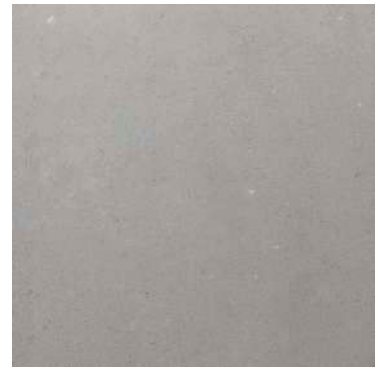
Timeless basics – black, white and grey colours. These patterns suit the widest range of applications and design schemes. Traditional colours, but with a sustainable twist.



**#PS014: Dark Knight**  
Origin: household electronic goods



**#PS023: Vintage Pearl**  
Origin: refrigerators



**#PS402: Pure Grey**  
Origin: small domestic appliances

## Limited Edition

Limited Edition patterns add bright accents to your decors. The range consists of patterns that are available in smaller volumes depending on supplies, so check their availability with your account manager before placing an order.




**#PS172: Salt Dune**  
Origin: spools



**#PS056: Sapphire Terrazzo**  
Origin: spools

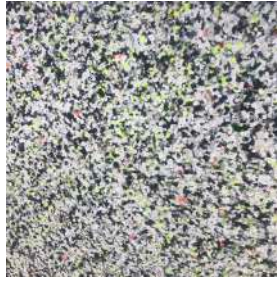


**#PS073: Emerald Ghost**  
Origin: small domestic appliances

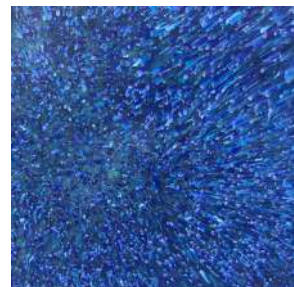
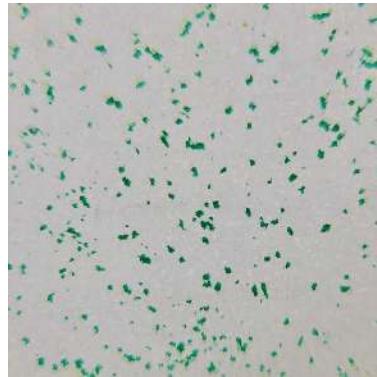
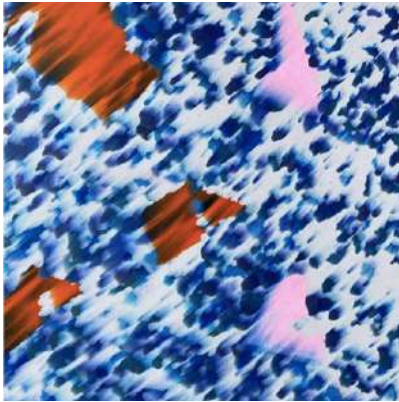


The following bespoke patterns illustrate the results of our R&D and custom work. Many of them were created in collaboration with our customers and partners.





These patterns demonstrate just part of the endless possibilities that can be achieved with our palette of high quality source materials, and include some more experimental choices. We do not usually maintain stock of bespoke designs, so make sure to consult our sales team about the availability of any patterns here that pique your interest – or challenge us to create something unique for you!





[hello@thegoodplasticcompany.com](mailto:hello@thegoodplasticcompany.com)

<b>United Kingdom</b>	+44 (0)1727 627040
<b>Netherlands</b>	+31 (0)20 399 1260



@the\_good\_plastic\_company

[thegoodplasticcompany.com](https://thegoodplasticcompany.com)



